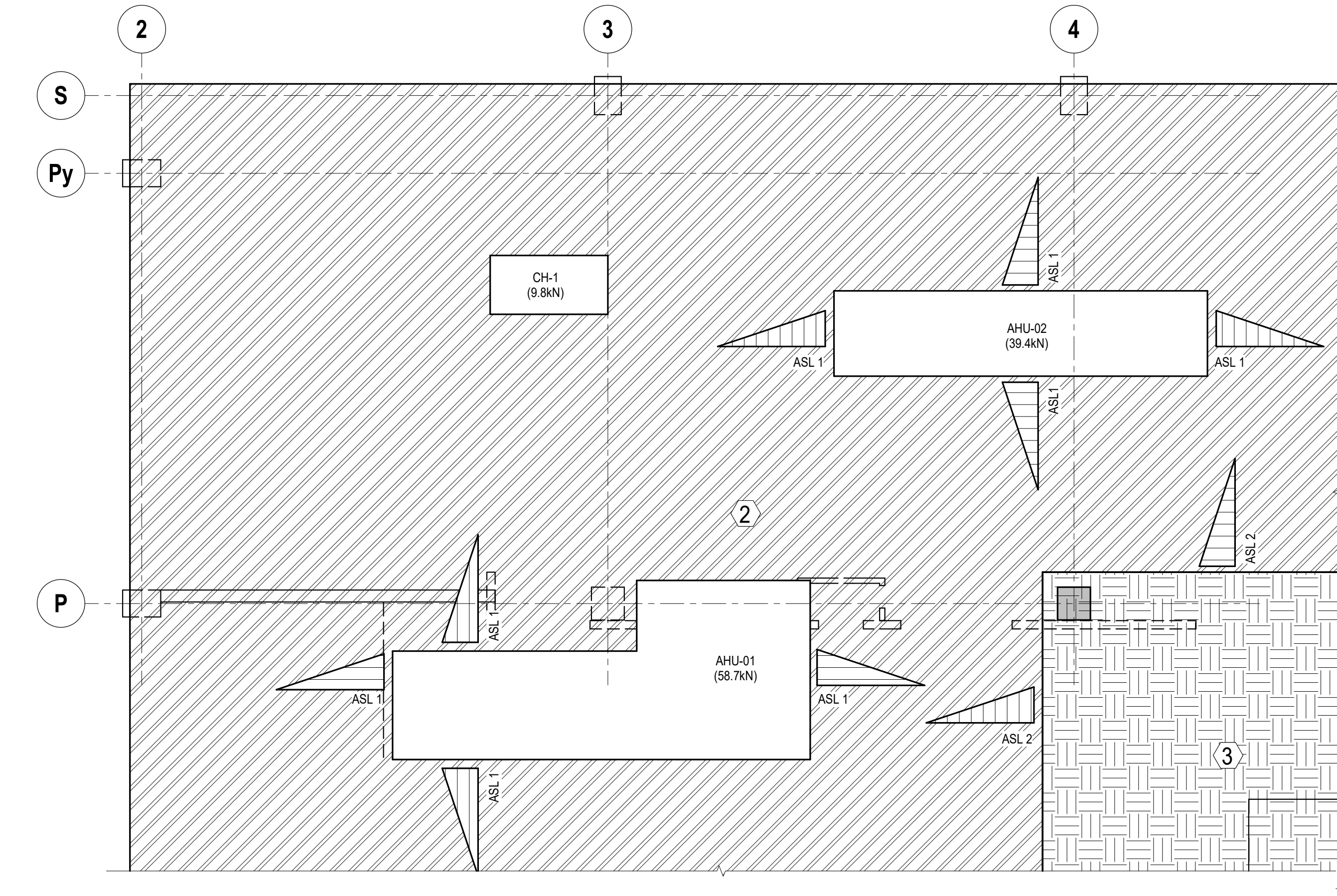


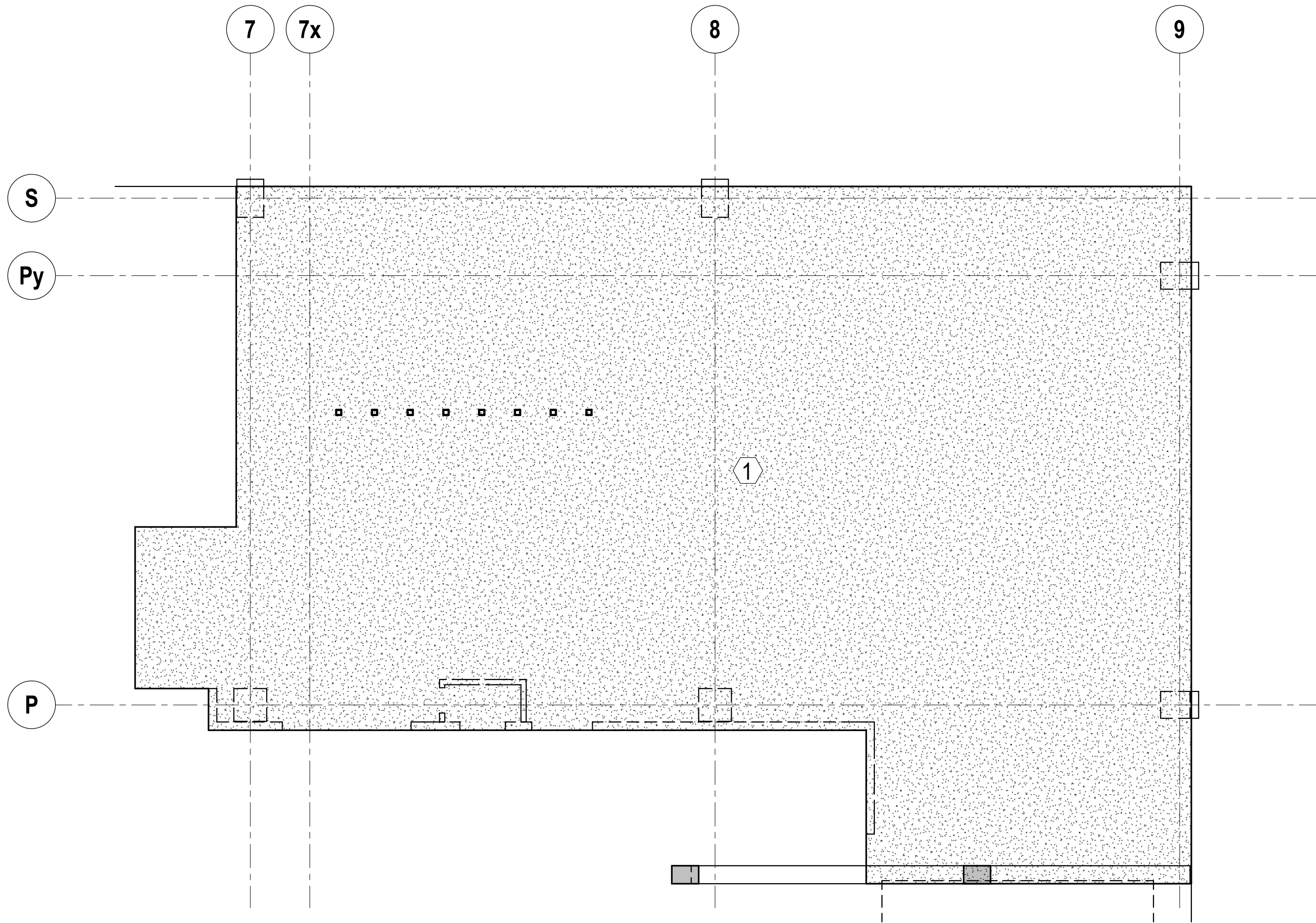
1 QIS LAB - THIRD FLOOR LOADING PLAN

SCALE: 3/16" = 1'-0"



2 QIS LAB - ROOF LOADING PLAN

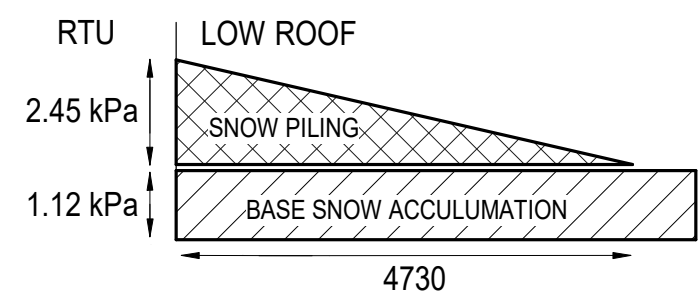
SCALE: 3/16" = 1'-0"



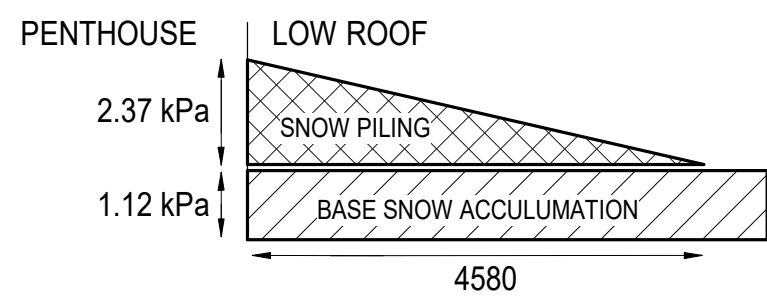
3 CQIQC SUITE - THIRD FLOOR LOADING PLAN

SCALE: 3/16" = 1'-0"

	UNIFORM LOADING SCHEDULE			
	DESIGNATION MARK	SDL	LIVE	SNOW
QIS LAB, CQIQC SUITE	1	1.0kPa (FLOORING, CEILING, MEP)	4.8kPa	-
ROOF	2	1.0kPa (ROOFING, CEILING, MEP)	1.0kPa	1.12 kPa + ASL WHERE APPLICABLE
PENTHOUSE	3	1.0kPa (FLOORING, CEILING, MEP)	4.8kPa	-



ACCUMULATE SNOW LOAD (ASL 1) DIAGRAM FOR RTU



ACCUMULATE SNOW LOAD (ASL 2) DIAGRAM FOR PENTHOUSE

STRUCTURAL ANALYSIS OF THE EXISTING BUILDING

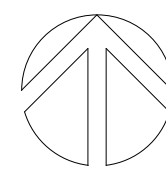
IN ADDITION TO THE WORK SHOWN ON THESE DRAWINGS, THE OVERALL PROJECT CONSISTS OF INTERIOR RENOVATION OF THE EXISTING BUILDING 3RD FLOOR AND THE INSTALLATION OF A NEW MECHANICAL UNIT ON THE EXISTING ROOF. THORNTON TOMASETTI HAS REVIEWED THE PROPOSED ARCHITECTURAL LAYOUT AND MECHANICAL EQUIPMENT WEIGHTS AND DETERMINED THAT THE PROPOSED LOADING DOES NOT EXCEED THE CAPACITY OF THE EXISTING STRUCTURE AS REQUIRED PER PART 4 OF THE ONTARIO BUILDING CODE



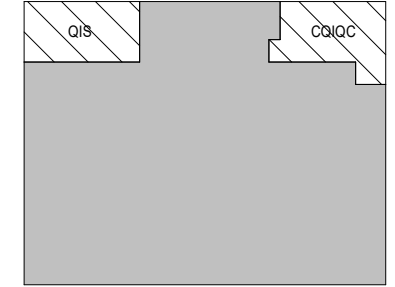
PROJECT LOGO



TRUE NORTH



CONSTRUCTION NORTH



KEY PLAN

5	ISSUED FOR TENDER	2025.11.27
4	ISSUED FOR 100% CD	2025.11.21
3	ISSUED FOR WORK CD	2025.10.17
2	ISSUED FOR PERMIT	2025.10.03
1	ISSUED FOR 100% DD R1	2025.08.19
No.	DESCRIPTION	DATE

REVISIONS:

DISCREPANCIES MUST BE REPORTED IMMEDIATELY TO THE ARCHITECT BEFORE PROCEEDING. ONLY FIGURED DIMENSIONS MUST BE USED. THE CONTRACTOR MUST CHECK THE DIMENSIONS ON SITE. THE DRAWING IS PROTECTED BY COPYRIGHT. ALL DIMENSIONS ARE SHOWN IN MILLIMETERS.

DO NOT SCALE THE DRAWINGS.

**mcCallumSather**  
Westinghouse HQ, 2nd Floor  
286 Sanford Ave. N  
Hamilton, ON L8L 6A1  
905.526.6700  
[www.mccallumsather.com](http://www.mccallumsather.com)

SEAL

CONSULTANTS:

**Thornton Tomasetti**  
Thornton Tomasetti, Canada Inc.  
116 Spadina Ave, Suite 301  
Toronto, Ontario, M5V 2K6  
T 416.306.8100 F 416.306.8101

PROJECT:

**MCLENNAN PHYSICAL  
LABORATORIES - P078-24-109 -  
QIS LAB & CQIQC SUITE**

**255 HURON STREET, TORONTO,  
ONTARIO M5S 3J1**

DRAWING TITLE:

**LOADING PLANS**

DRAWN BY: RM DATE: 09/18/2025

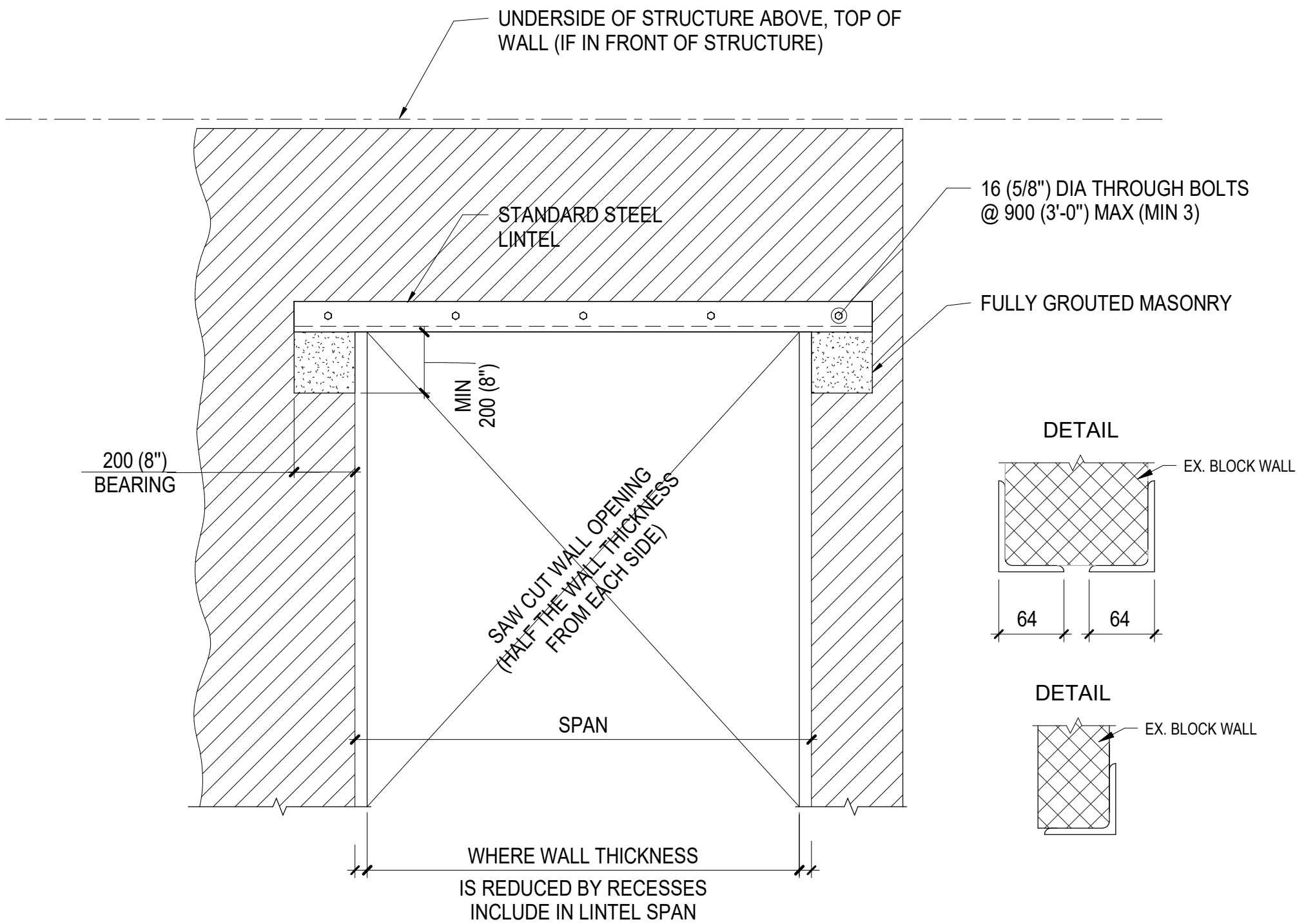
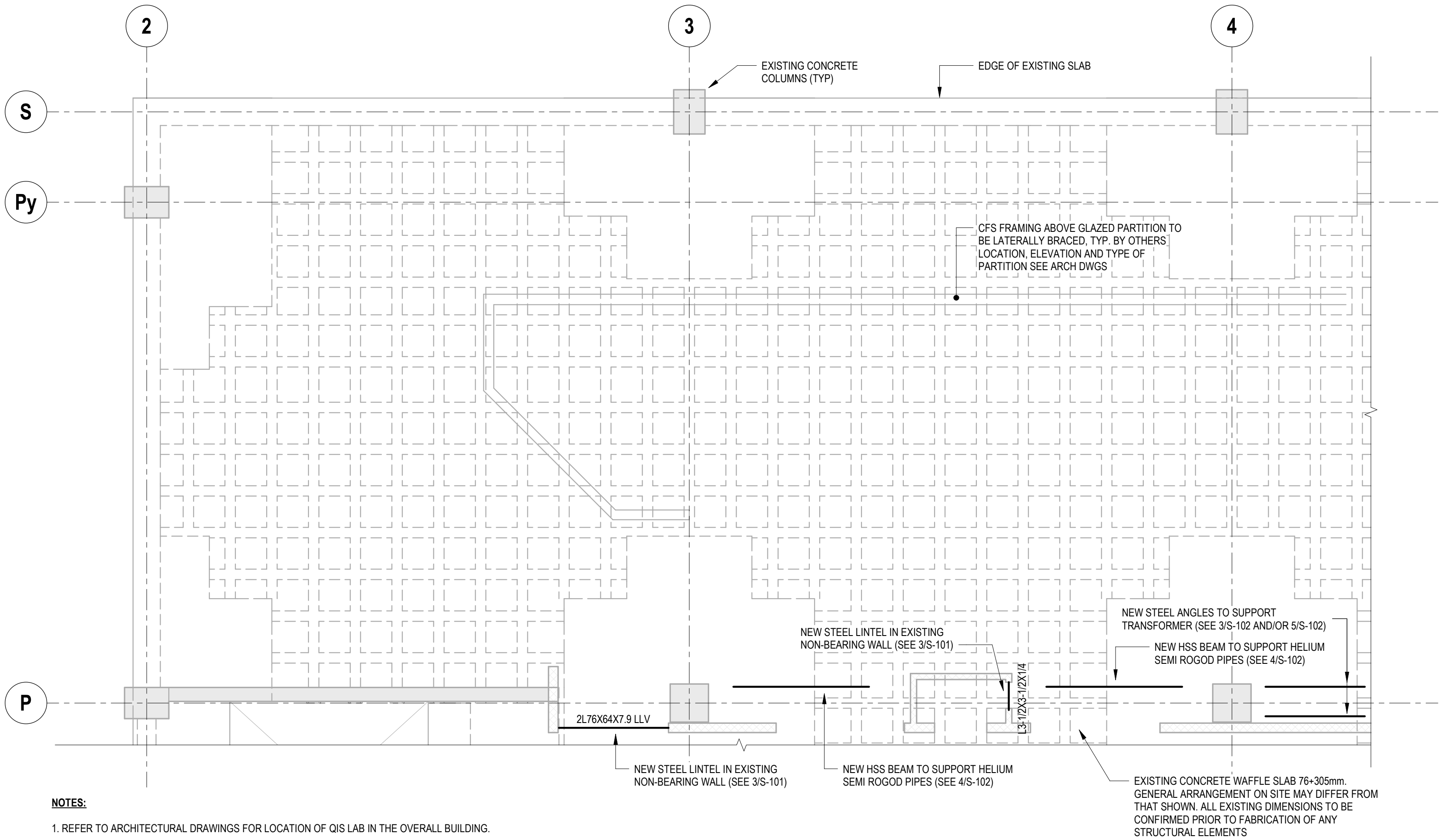
CHECKED BY: EA SCALE: As indicated

PROJECT NO: 24012390

DRAWING NO:

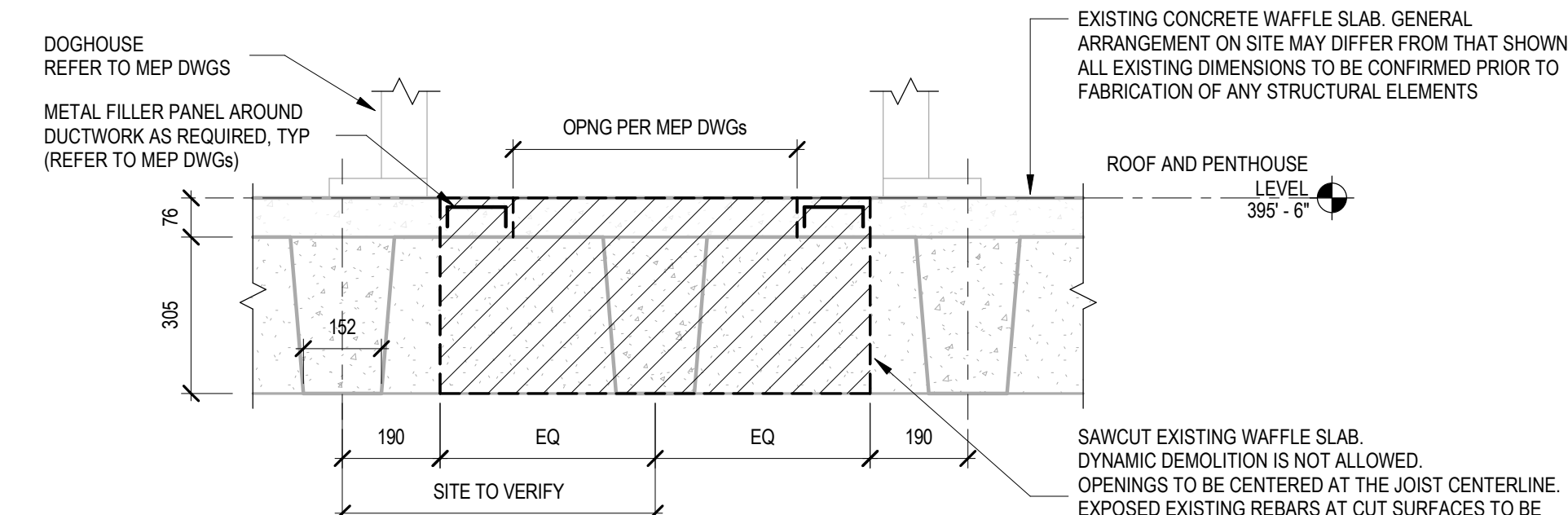
**S-002**





### 3 TYPICAL STEEL LINTEL DETAIL

SCALE: 3/4" = 1'-0"

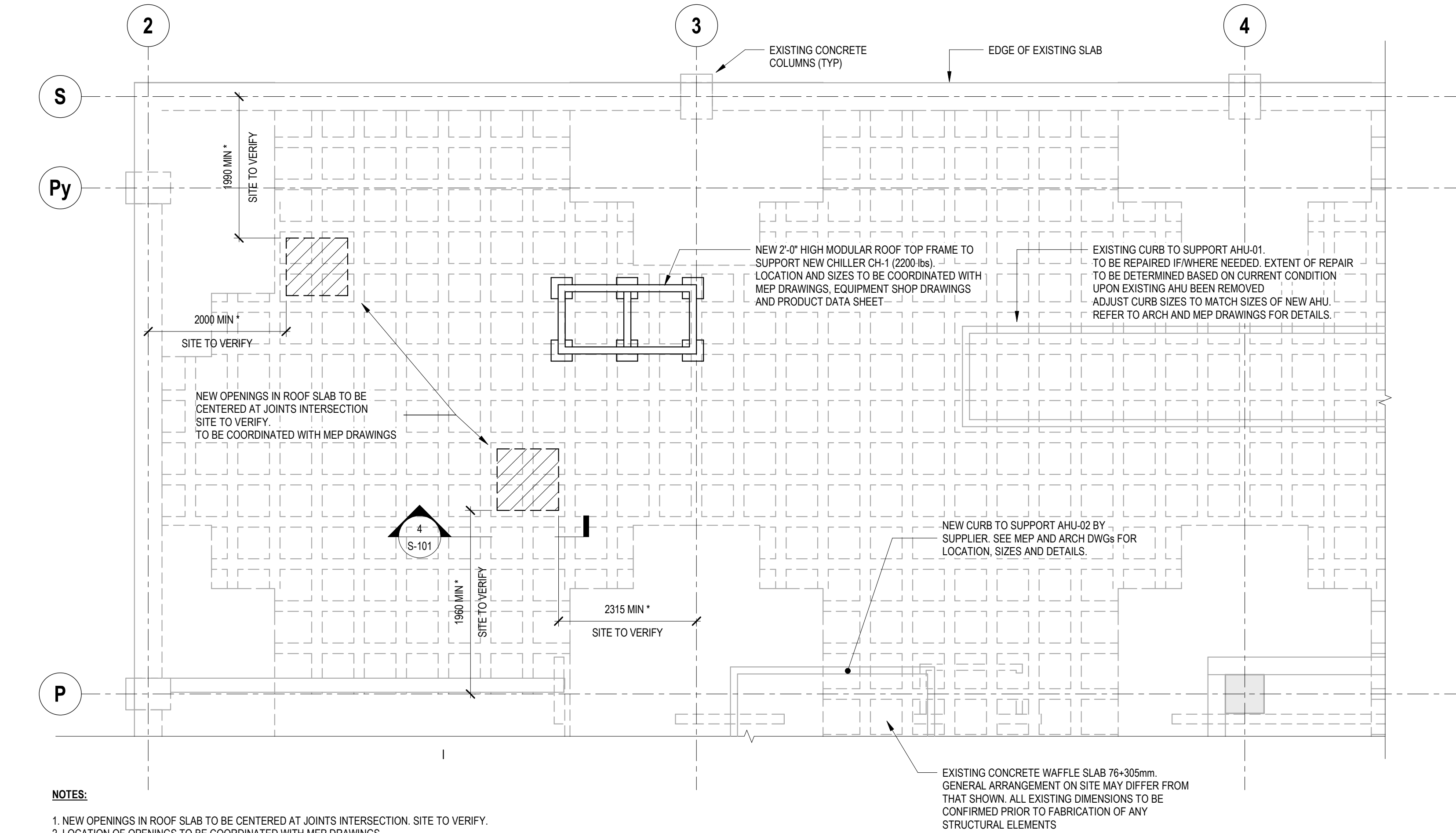


### 4 SECTION AT NEW OPENING

SCALE: 1" = 1'-0"

### 1 QIS LAB - THIRD FLOOR FRAMING PLAN

SCALE: 1/4" = 1'-0"

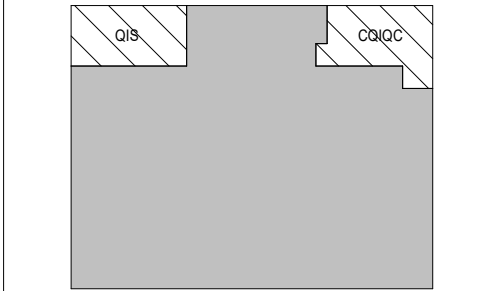
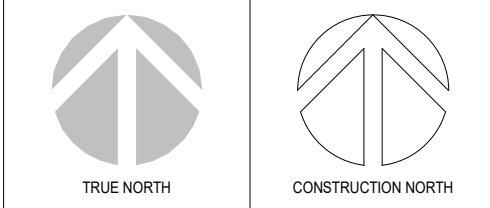


### 2 QIS LAB - ROOF FRAMING PLAN

SCALE: 1/4" = 1'-0"



PROJECT LOGO



KEY PLAN

5	ISSUED FOR TENDER	2025.11.27
4	ISSUED FOR 100% CD	2025.11.21
3	ISSUED FOR PERMIT	2025.10.17
2	ISSUED FOR PERMIT	2025.10.03
1	ISSUED FOR 100% DD R1	2025.08.19
No.	DESCRIPTION	DATE

REVISIONS:

DISCREPANCIES MUST BE REPORTED IMMEDIATELY TO THE ARCHITECT BEFORE PROCEEDING. ONLY FIGURED DIMENSIONS MUST BE USED. THE CONTRACTOR MUST CHECK THE DIMENSIONS ON SITE. THE DRAWING IS PROTECTED BY COPYRIGHT. ALL DIMENSIONS ARE SHOWN IN MILLIMETERS.

DO NOT SCALE THE DRAWINGS.

**mcCallumSather**  
Westinghouse HQ, 2nd Floor  
286 Sanford Ave. N  
Hamilton, ON L8L 6A1  
905.526.6700  
[www.mccallumsather.com](http://www.mccallumsather.com)

CONSULTANTS:

**Thornton Tomasetti**  
Thornton Tomasetti, Canada Inc.  
116 Spadina Ave., Suite 301  
Toronto, Ontario, M5V 2K6  
T 416.306.8100 F 416.306.8101

PROJECT:

**MCLENNAN PHYSICAL  
LABORATORIES - P078-24-109 -  
QIS LAB & CQICQ SUITE**

**255 HURON STREET, TORONTO,  
ONTARIO M5S 3J1**

DRAWING TITLE:

**QIS LAB - STRUCTURAL  
FRAMING**

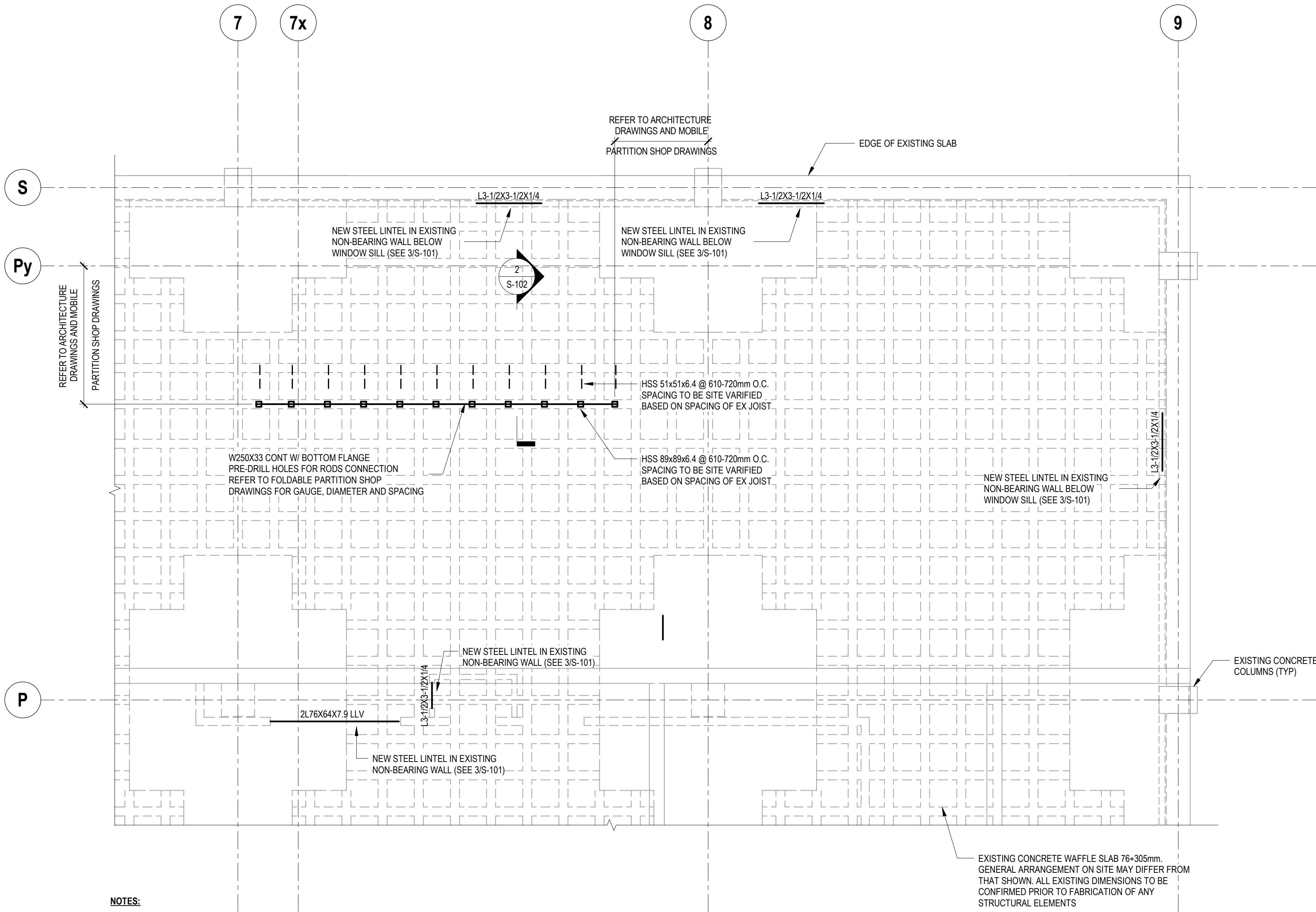
DRAWN BY:	RM	DATE:	09/18/25
CHECKED BY:	EA	SCALE:	As indicated

PROJECT NO: **24012390**

DRAWING NO:

**S-101**





## 1 CQIQC SUITE - STRUCTURAL FRAMING PLAN FOR MOVEABLE PARTITION AND LINTELS

SCALE: 1/4" = 1'-0"

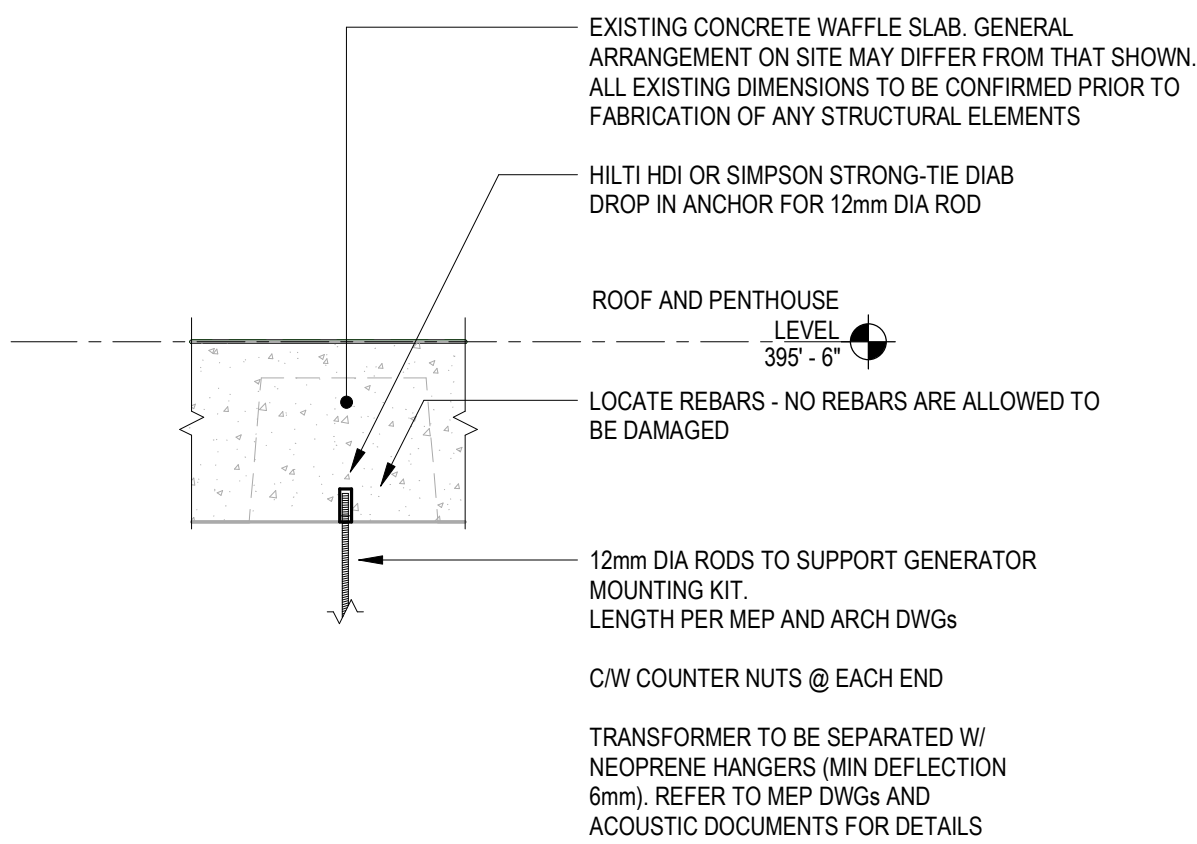
### NOTES:

- CONTRACTOR TO COORDINATE LAYOUT OF PARTITION WALLS WITH REQUIRED SUPPORT. NOTIFY ENGINEER OF RECORD OF ANY DISCREPANCIES OR CONFLICTS WITH EXISTING SITE CONDITIONS.
- MATERIAL SHALL CONFORM TO THE FOLLOWING MINIMUM REQUIREMENTS:  

STEEL ANGLES:	CAN/CSA-G40.21, GRADE 300W
HSS:	CAN/CSA-G40.21, MIN YIELD STRENGTH 345MPa
BOLTS:	ASTM A325M
WELD ELECTRODES:	E49XX
PLATES:	CAN/CSA-G40.21, GRADE 300W
- EXISTING CONCRETE SHALL BE SCANNED AND REVIEWED BY ENGINEER OF RECORD TO OPTIMIZE THE LOCATION OF ANCHORS RELATIVE TO THE EXISTING CONCRETE REINFORCING LOCATIONS. NOTIFY ENGINEER OF RECORD AFTER THE COMPLETION OF THE SCANNING AND ALLOW A MINIMUM OF 3 DAYS FOR REVIEW. FABRICATION OF STEEL ELEMENTS SHALL NOT COMMENCE UNTIL SCANS ARE REVIEWED AND ANCHOR LOCATIONS ARE CONFIRMED.
- FIELD MODIFICATION OF STRUCTURAL STEEL IS PROHIBITED WITHOUT PRIOR WRITTEN APPROVAL OF THE DESIGN PROFESSIONALS.
- ALL STEEL DETAILS AND CONNECTIONS SHALL BE IN ACCORDANCE WITH THE REQUIREMENTS OF CSA S16 AND THE HANDBOOK OF STEEL CONSTRUCTION.
- ALL CONNECTIONS SHALL BE DESIGNED AND DETAILED BY A PROFESSIONAL ENGINEER LICENSED IN THE PROVINCE OF ONTARIO. THE DESIGN AND DETAILING SHALL COMPLY WITH ALL APPLICABLE CODES AND SPECIFICATION SECTIONS.

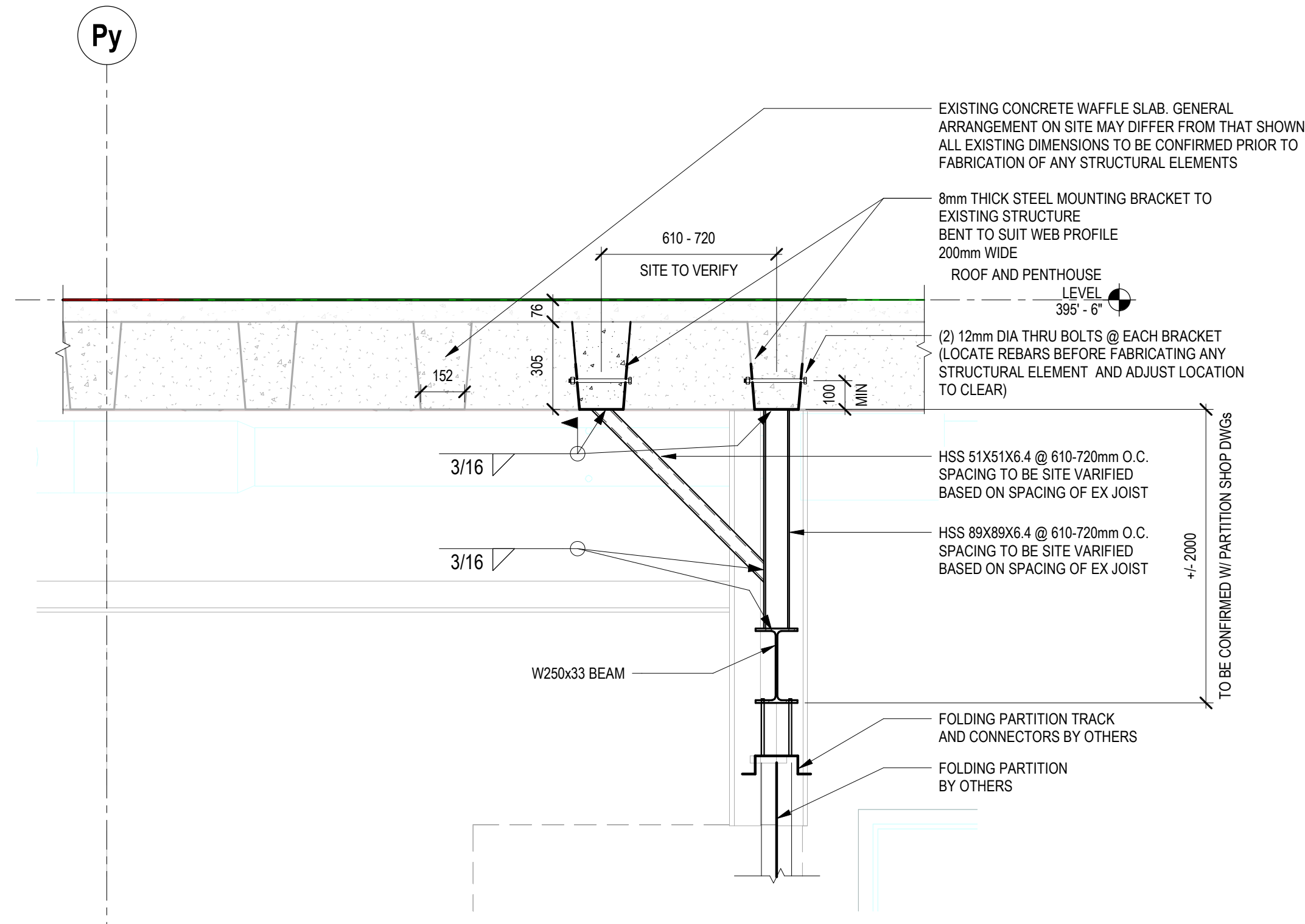
### STRUCTURAL ANALYSIS OF THE EXISTING BUILDING

IN ADDITION TO THE WORK SHOWN ON THESE DRAWINGS, THE OVERALL PROJECT CONSISTS OF INTERIOR RENOVATION OF THE EXISTING BUILDING 3RD FLOOR AND THE INSTALLATION OF A NEW MECHANICAL UNIT ON THE EXISTING ROOF. THORNTON TOMASETTI HAS REVIEWED THE PROPOSED ARCHITECTURAL LAYOUT AND MECHANICAL EQUIPMENT WEIGHTS AND DETERMINED THAT THE PROPOSED LOADING DOES NOT EXCEED THE CAPACITY OF THE EXISTING STRUCTURE AS REQUIRED PER PART 4 OF THE ONTARIO BUILDING CODE



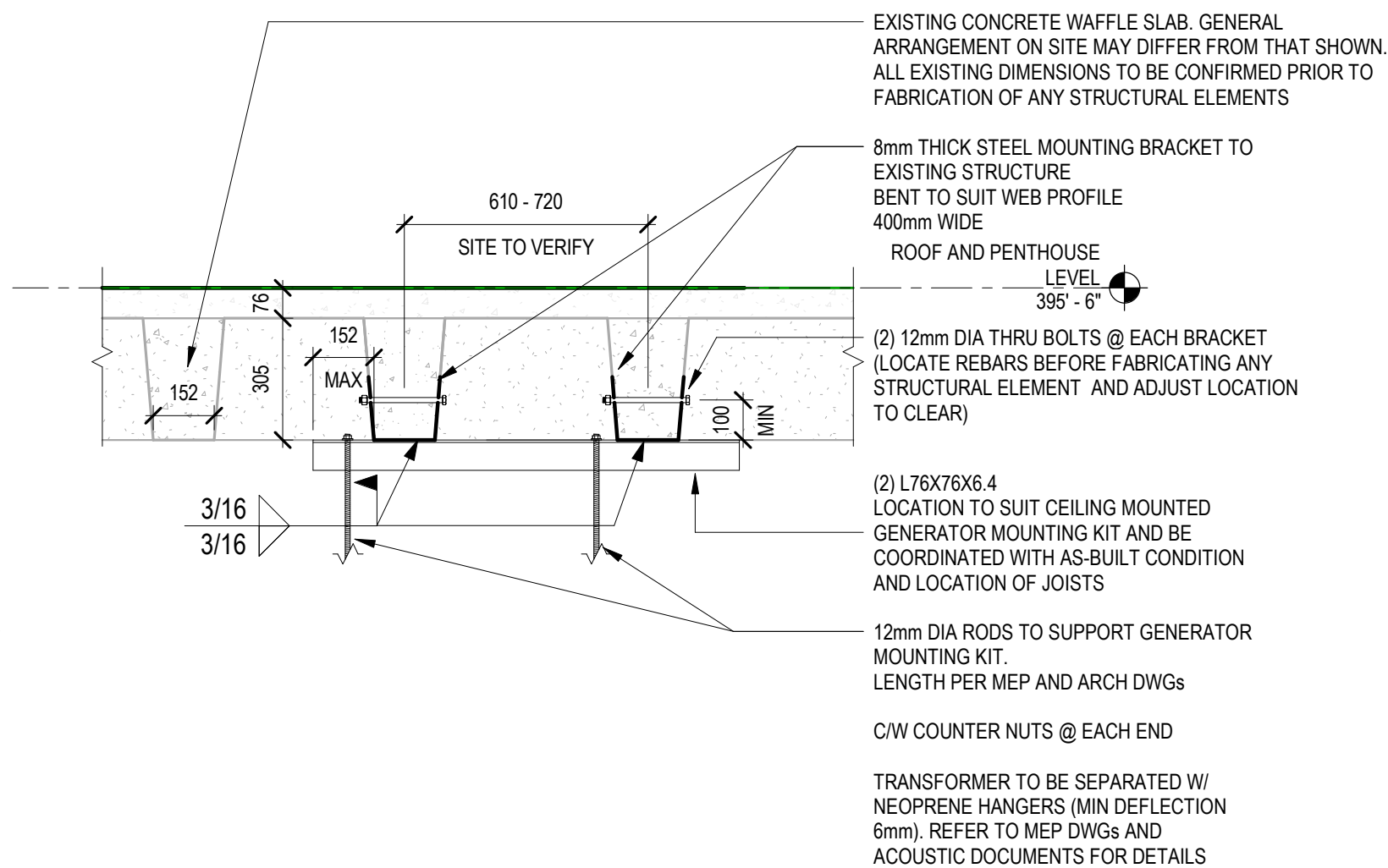
## 5 SECTION AT TRANSFORMER SUPPORT (SOLID SLAB)

SCALE: 3/4" = 1'-0"



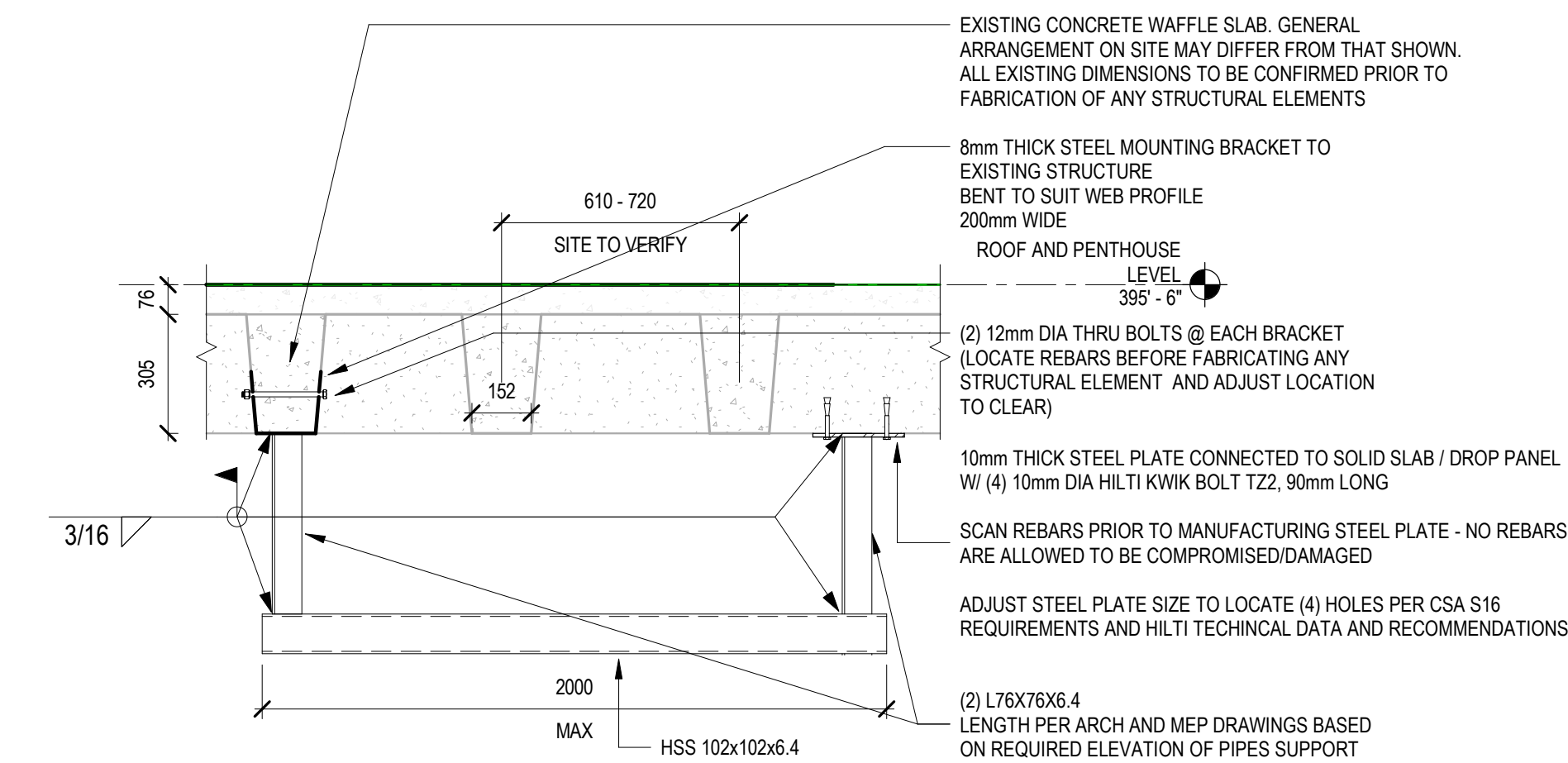
## 2 SECTION AT MOVEABLE PARTITION FRAMING

SCALE: 3/4" = 1'-0"



## 3 SECTION AT TRANSFORMER SUPPORT (WAFFLE SLAB)

SCALE: 3/4" = 1'-0"

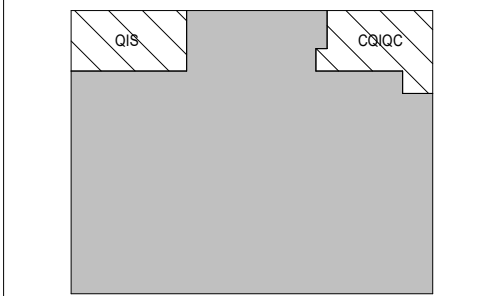
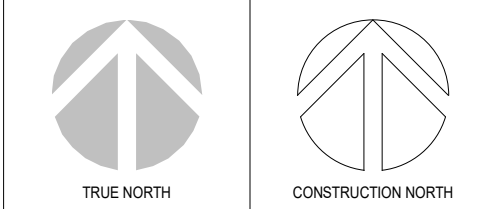


## 4 SECTION AT HELIUM SEMIRIGID PIPES SUPPORT

SCALE: 3/4" = 1'-0"



PROJECT LOGO



KEY PLAN

5	ISSUED FOR TENDER	2025.11.27
4	ISSUED FOR 10% CD	2025.11.21
3	ISSUED FOR WORK CD	2025.10.17
2	ISSUED FOR PERMIT	2025.10.03
1	ISSUED FOR 10% DD R1	2025.08.19
No.	DESCRIPTION	DATE

REVISIONS:

DISCREPANCIES MUST BE REPORTED IMMEDIATELY TO THE ARCHITECT BEFORE PROCEEDING. ONLY FIGURED DIMENSIONS MUST BE USED. THE CONTRACTOR MUST CHECK THE DIMENSIONS ON SITE. THE DRAWING IS PROTECTED BY COPYRIGHT. ALL DIMENSIONS ARE SHOWN IN MILLIMETERS.

DO NOT SCALE THE DRAWINGS.

**mcCallumSather**  
Westinghouse HQ, 2nd Floor  
286 Sanford Ave. N  
Hamilton, ON L8L 6A1  
905.526.6700  
[www.mccallumsather.com](http://www.mccallumsather.com)

SEAL

CONSULTANTS:

**Thornton Tomasetti**  
Thornton Tomasetti, Canada Inc.  
116 Spadina Ave, Suite 301  
Toronto, Ontario, M5V 2K6  
T 416.306.8100 F 416.306.8101

PROJECT:

**MCLENNAN PHYSICAL  
LABORATORIES - P078-24-109 -  
QIS LAB & CQIQC SUITE**

**255 HURON STREET, TORONTO,  
ONTARIO M5S 3J1**

DRAWING TITLE:

**CQIQC SUITE - STRUCTURAL  
FRAMING**

DRAWN BY:	RM	DATE:	09/18/25
CHECKED BY:	EA	SCALE:	As indicated

PROJECT NO. **24012390**

DRAWING NO. **S-102**